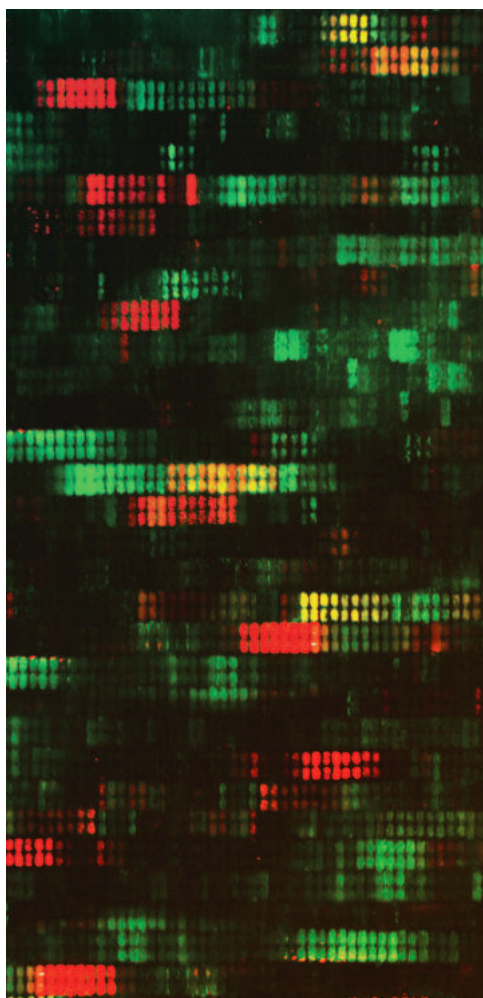


BECOME AN EXPERT

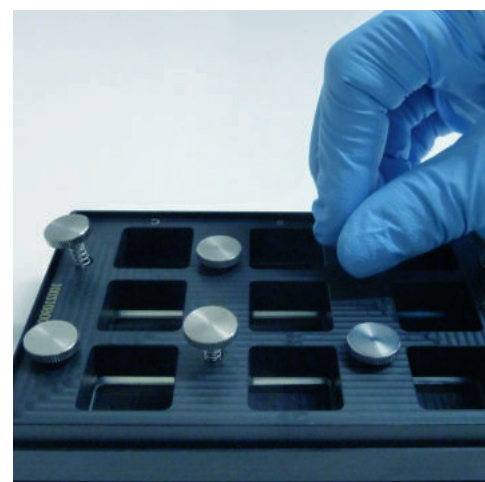
Learn all you need to know
about laser-printed microarrays
and epitope mapping.



NOV
7-8
2019

Join us in Heidelberg for a 2-day
hands-on training.
Register now!

training@pepperprint.com



For more information about this course, visit our website at:
www.pepperprint.com/updates/practical-courses

PEPPERPRINT
A NEW DIVERSITY 

PROGRAM

7.11.19 Thursday

9:30 - 10:00	Get together
10:00 - 10:45	Talk 1 - Introduction to PEPPERPRINT
11:00 - 12:00	Talk 2 - Technical instructions on the Assay
12:00 - 13:00	Lunch
13:00 - 16:00	Hands-on training in the laboratory
16:00 - 16:45	Talk 3 - Applications of PEPPERPRINT Peptide Microarrays
18:00	Dinner

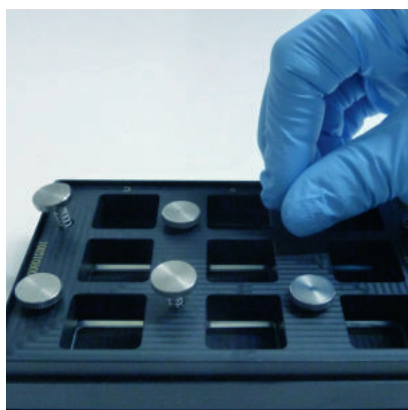
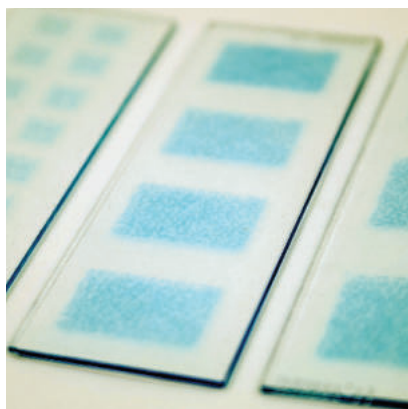
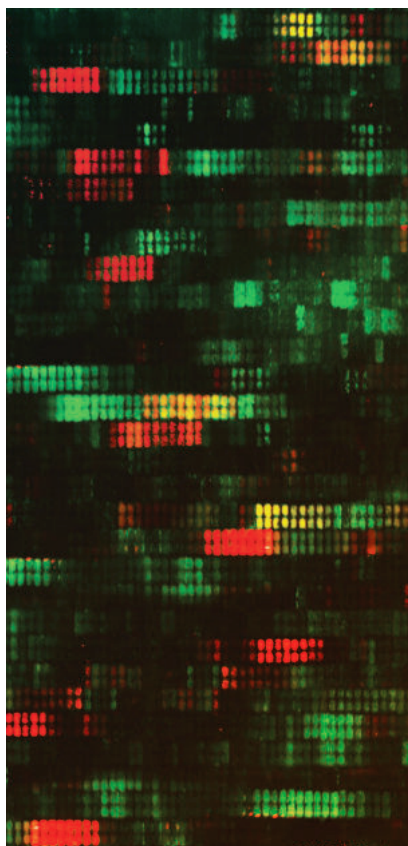
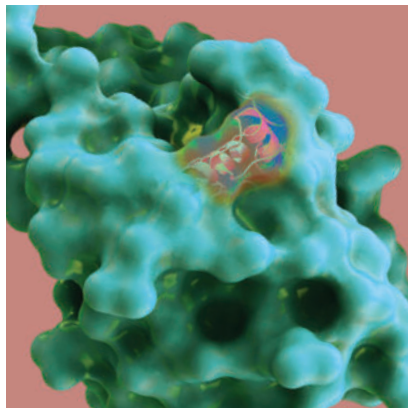
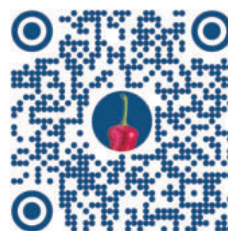
8.11.19 Friday

9:30 - 10:00	Get together
10:00 - 10:45	Talk 4 - Data Analysis
11:00 - 12:00	Hands-on training in the laboratory
12:00 - 13:00	Lunch
13:00 - 17:00	Hands-on training in the laboratory
17:00	Departure

Training venue

PEPPERPRINT GmbH HQ
Rischerstr. 12
69123 Heidelberg
Germany

+49 6221 7264889



How to get there by public transportation:

The PEPPERPRINT Headquarters is located in walking distance (8min) from the RNV5 Tram Station "Wieblingen Taubenfeld".

Please take Tram RNV5 from Heidelberg Bismarkplatz (15min ride) or Heidelberg main station (Heidelberg Hauptbahnhof / 8min ride) in the direction towards Mannheim.

Recommended Airports:

• Frankfurt am Main (FRA)

Shuttle service to Heidelberg from Frankfurt Airport: <http://frankfurt-airport-shuttles.de/en/home-2/> or <https://www.tls-heidelberg.de/en/>

You can also take the Train from "Frankfurt(M)Flughafen" to Heidelberg Hbf.

• Stuttgart (STR)

You can take the Train from "Stuttgart Flughafen/Messe" to Heidelberg Hbf.