

The PEPperCHIP® Incubation Tray enables one-by-one assays with custom or standard PEPperCHIP® peptide microarrays. PEPperCHIP® Incubation Trays are available in the 3/1, 3/2, 3/3, 3/4, 3/5 and 3/(3-4-5) and 3/16-well format. The wells can be filled with liquids, in order to assay various array copies on the PEPperCHIP® microarrays or to moisten the glass slides. PEPperCHIP® Incubation Trays are fully reusable and enable shaking incubation.



The PEPperCHIP® Incubation Trays were developed in cooperation with scientists from the German Cancer Research Center for incubation of peptide arrays. They were designed to meet the high demands of routine laboratory use and have proven their effectiveness. Their notable advantages are the absolutely secure and reproducible separation of the single incubation wells. Therewith, contamination or mixing of solutions between wells is inhibited. PEPperCHIP® Incubation Trays are provided with a suitable lid to minimize the risk of evaporation or

contamination of samples. The PEPperCHIP® Incubation Trays are designed for object glass slides with standard size according to ANSI (American National Standards Institute) Society for Biomolecular Sciences for Microplates (Footprint Dimensions).

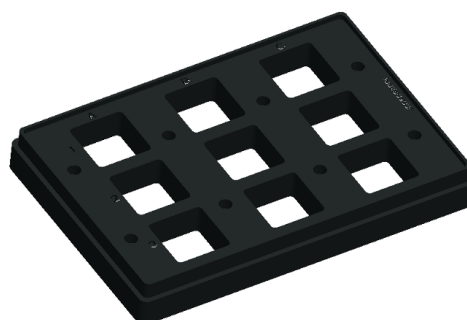
Article number	Description	Subarray area	Peptides in duplicates per subarray
PPC.004.001	PEPperCHIP® Incubation Tray 3/1	70 x 20 mm	5,412



PPC.005.001	PEPperCHIP® Incubation Tray 3/2	34 x 20 mm	2,376
-------------	------------------------------------	------------	-------



PPC.006.001	PEPperCHIP® Incubation Tray 3/3	20 x 20 mm	1,320
-------------	------------------------------------	------------	-------



Article number	Description	Subarray area	Peptides in duplicates per subarray
PPC.007.001	PEPperCHIP® Incubation Tray 3/4	16 x 20 mm	924



PPC.008.001	PEPperCHIP® Incubation Tray 3/5	11.6 x 20 mm	726
-------------	------------------------------------	--------------	-----

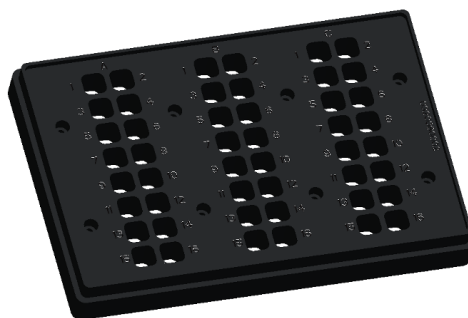


PPC.009.001	PEPperCHIP® Incubation Tray 3/(3-4-5)	11.6 x 20 mm (left)	726 (left)
-------------	--	---------------------	------------



16 x 20 mm (middle)	924 (middle)
20 x 20 mm (right)	1,320 (right)

Article number	Description	Subarray area	Peptides in duplicates per subarray
PPC.010.001	PEPperCHIP® Incubation Tray 3/16	7.25 x 7.25 mm	120



Safety information

The PEPperCHIP® Incubation Tray may not be used:

- for in vitro diagnostic purposes
- for the following liquids: acetone, ether, benzene, chloroform, concentrated acids
- at temperatures over 65°C

The incubation chamber must be stored at room temperature. It must not be exposed to direct sunlight.

Cleaning

The incubation tray can be cleaned with mild detergents or distilled water.

No abrasive or aggressive cleaning agents should be used.