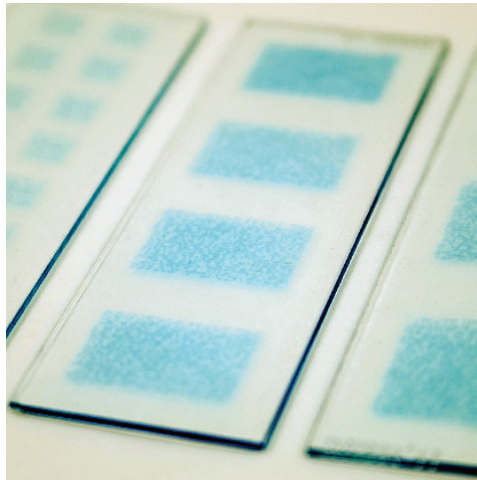
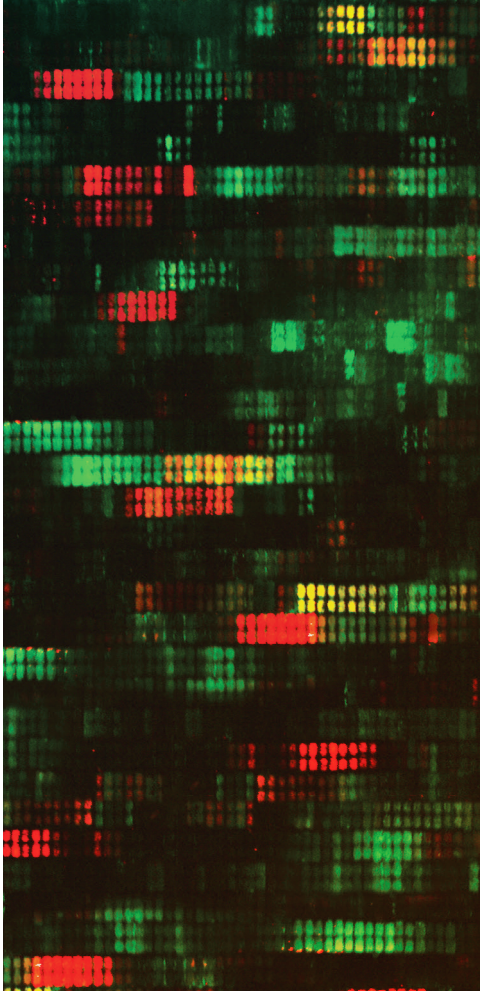


# BECOME AN EXPERT

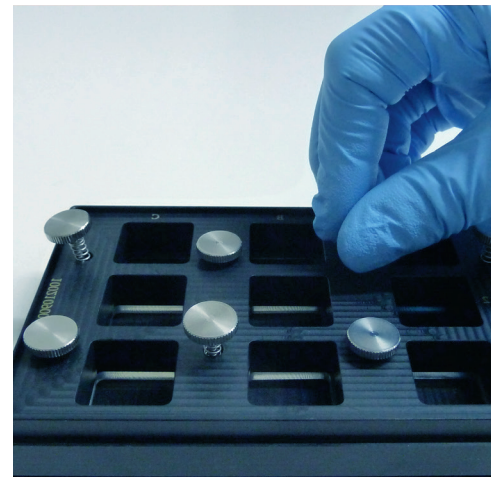
Learn all you need to know  
about laser-printed microarrays  
and epitope mapping.



**APRIL  
11-12  
2024**

## HANDS-ON TRAINING MATERIALS

- Presentations
- Immunoassay Protocol
- Additional Resources



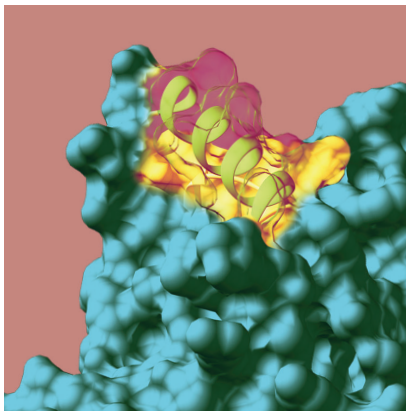
For more information about this course, visit our website at:  
<https://www.pepperprint.com/downloads-resources/pepcademy>

**PEPPERPRINT**  
A NEW DIVERSITY



In cooperation with

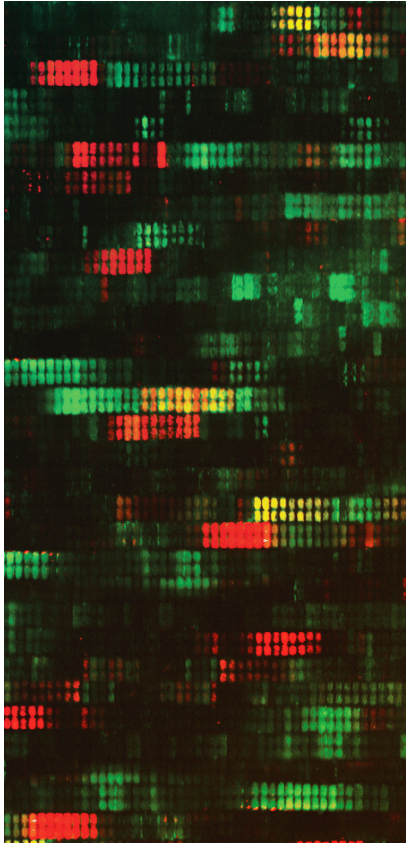
**INNOPSYS**



# PROGRAM

## 11.04.24 Thursday

- 9:30 - 10:00 Get together
- 10:00 - 10:30 Talk 1 - Introduction to PEPPERPRINT
- 10:45 - 11:15 Talk 2 - Technical instructions on the Assay
- 11:30 - 12:00 Talk 3 - Applications of PEPPERPRINT Peptide Microarrays
- 12:00 - 13:00 Lunch
- 13:00 - 15:00 Hands-on training in the laboratory
- 15:15 - 16:15 Tour of Production Facility and Talk 4 - cLIFT printer
- 18:00 Dinner



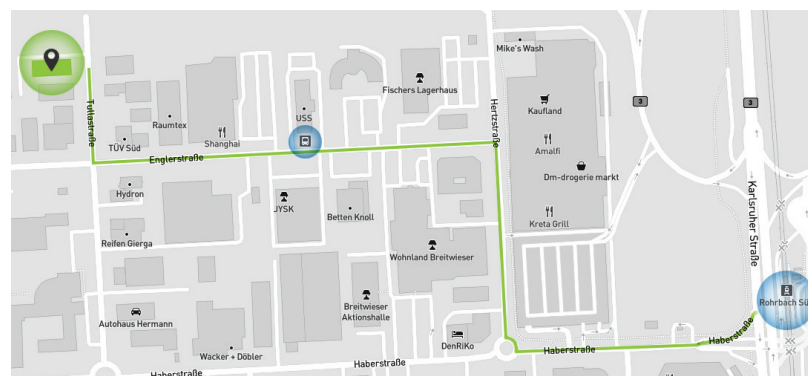
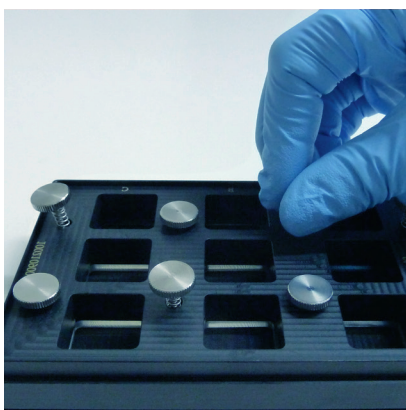
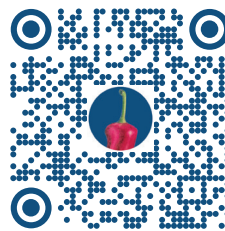
## 12.04.24 Friday

- 9:30 - 10:00 Get together
- 10:00 - 10:30 Hands-on training in the laboratory
- 10:30 - 11:15 Scanner demo in the lab
- 11:15 - 11:45 Hands-on training in the laboratory
- 12:00 - 13:00 Lunch
- 13:00 - 13:45 Hands-on training in the laboratory
- 13:45 - 14:15 Talk 5 - Data Acquisition and Analysis with Innopsys
- 14:15 - 17:00 Hands - On training: Data analysis
- 17:00 Departure

## Training venue

PEPPERPRINT GmbH HQ  
Tullastr. 2  
69126 Heidelberg  
Germany

+49 6221 7264889



### How to get there by public transportation:

The PEPperPRINT Headquarters is located in walking distance (11min) from the Tram Station "Rohrbach Süd" or from the bus station "Englerstraße"

### Recommended Airports:

#### Frankfurt am Main (FRA)

Shuttle service to Heidelberg from Frankfurt Airport: <https://www.tls-heidelberg.de/en/>  
You can also take the Train from "Frankfurt(M)Flughafen" to Heidelberg Hbf.

#### Stuttgart (STR)

You can take the train from "Stuttgart Flughafen/Messe" to Heidelberg Hbf.