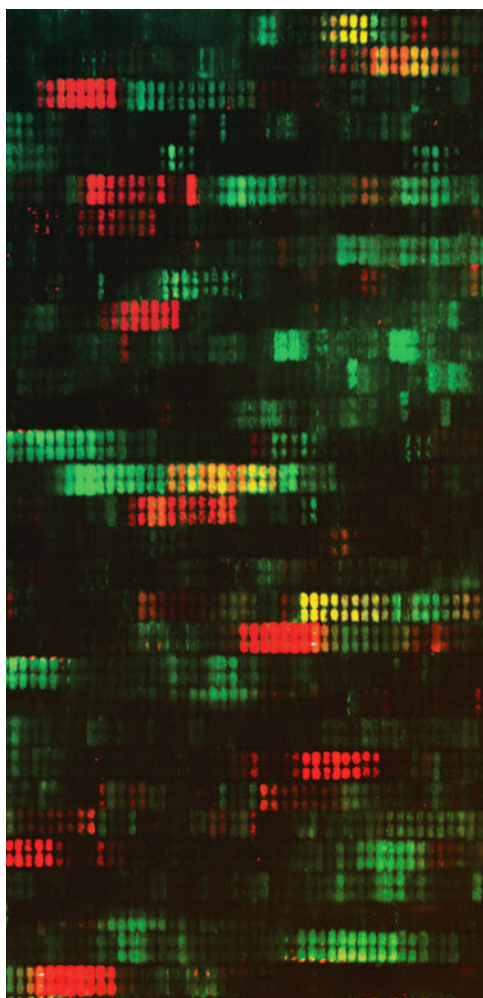


# BECOME AN EXPERT

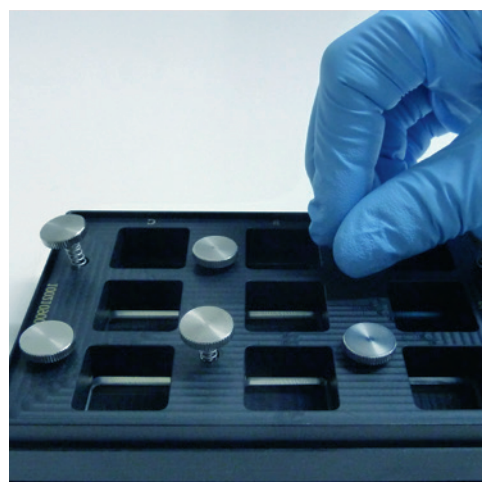
Learn all you need to know  
about laser-printed microarrays  
and epitope mapping.



**MAR  
26-27  
2026**

Join us in Heidelberg for a 2-day  
hands-on training.  
Register now!

**[training@pepperprint.com](mailto:training@pepperprint.com)**



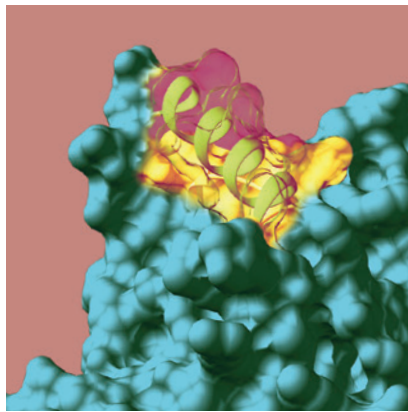
For more information about this course, visit our website at:  
[www.pepperprint.com/updates/practical-courses](http://www.pepperprint.com/updates/practical-courses)

**PEPPERPRINT**  
DECIPHERING IMMUNITY



In cooperation with

**INNOSYS**



# PROGRAM

## 26.03.26 Thursday

9:45 - 10:00	Get together
10:00 - 10:15	Talk 1 - Introduction to PEPperPRINT
10:15 - 11:15	Talk 2 - Technical instructions on the assay
11:30 - 12:00	Talk 3 - Applications of PEPperPRINT Peptide Microarrays
12:00 - 13:00	Lunch
13:00 - 15:00	Hands-on training in the laboratory
15:15 - 16:00	Tour of production facility and Talk 4 - cLIFT technology
18:00	Dinner

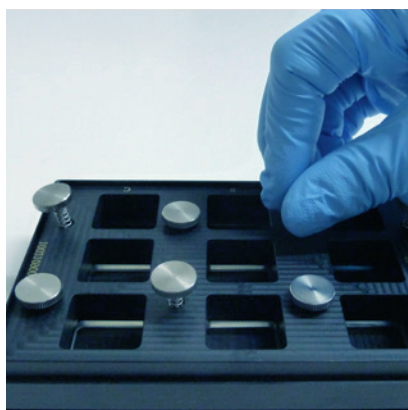
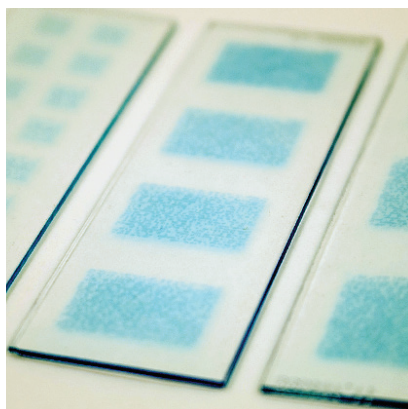
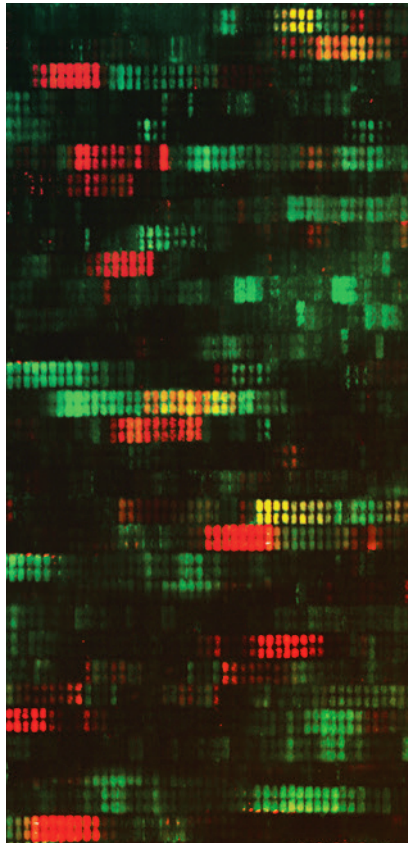
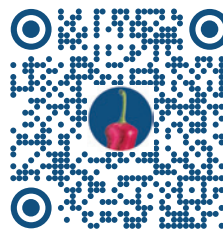
## 27.03.26 Friday

9:45 - 10:00	Get together
10:00 - 12:00	Hands-on training in the laboratory
12:00 - 13:00	Lunch
13:00 - 13:30	Talk 5 - Data acquisition and analysis
13:30 - 17:00	Hands-on training: data analysis
17:00	Departure

## Training venue

PEPperPRINT GmbH HQ  
Tullastr. 2  
69126 Heidelberg  
Germany

+49 6221 7264889



How to get there by public transportation:

The PEPperPRINT Headquarters is located within walking distance (11min) from the Tram Station "Rohrbach Süd" or from the bus station (5min) "Englerstraße"

Recommended Airports:

Frankfurt am Main (FRA)

Shuttle service to Heidelberg from Frankfurt Airport: <http://frankfurt-airport-shuttles.de/en/home-2/> or <https://www.tls-heidelberg.de/en/>

You can also take the Train from "Frankfurt(M)Flughafen" to Heidelberg Hbf.

Stuttgart (STR)

You can take the Train from "Stuttgart Flughafen/Messe" to Heidelberg Hbf.