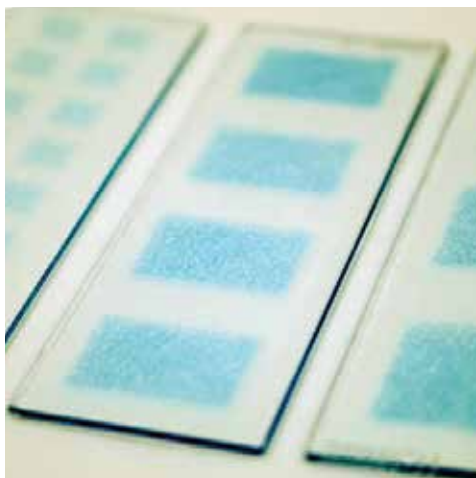


BECOME AN EXPERT

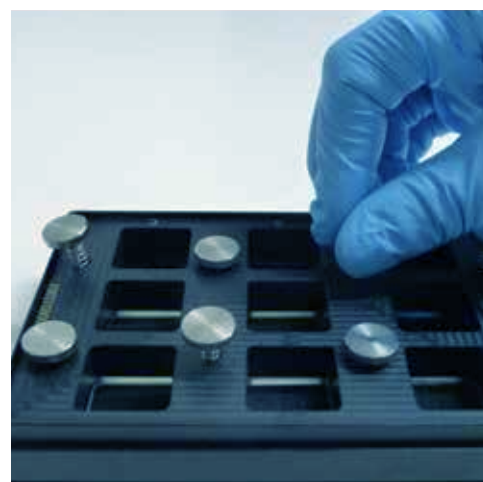
Learn all you need to know
about laser-printed microarrays
and epitope mapping.



**JUNE
22-23
2023**

HANDS-ON TRAINING MATERIALS

- Presentations
- Immunoassay Protocol
- Additional Resources



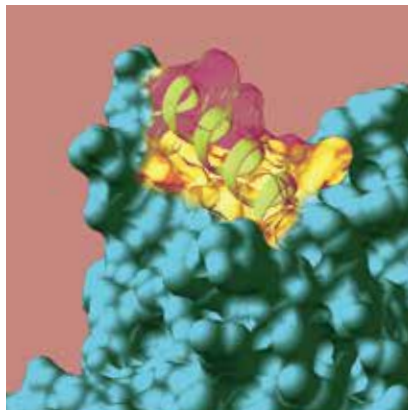
For more information about this course, visit our website at:
<https://www.pepperprint.com/downloads-resources/pepcademy>

PEPPERPRINT
A NEW DIVERSITY



In cooperation with

INNOSYS



PROGRAM

22.06.23 Thursday

- 9:30 - 10:00 Get together
- 10:00 - 10:45 Talk 1 - Introduction to PEPperPRINT
- 11:00 - 12:00 Talk 2 - Technical instructions on the Assay
- 12:00 - 13:00 Lunch
- 13:00 - 16:00 Hands-on training in the laboratory
- 16:00 - 16:45 Talk 3 - Applications of PEPperPRINT Peptide Microarrays
- 18:00 Dinner

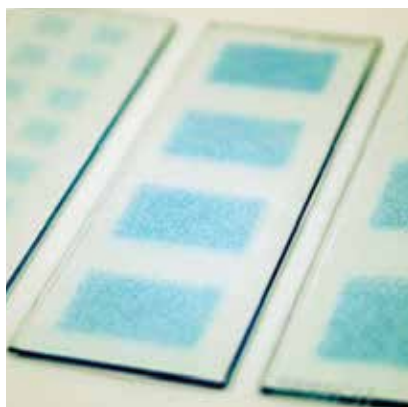
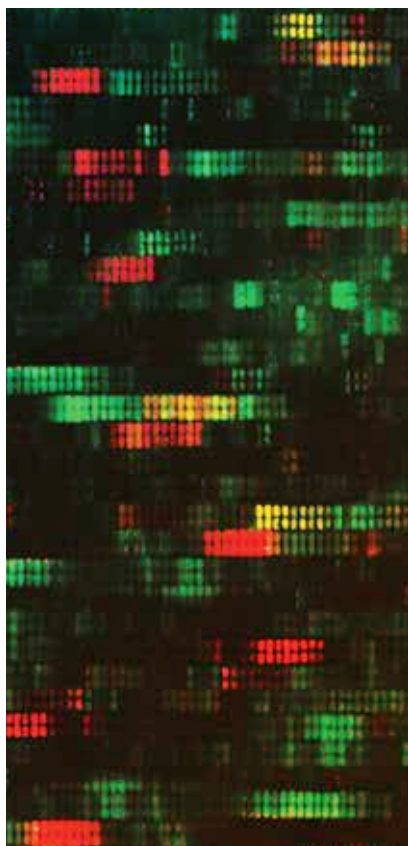
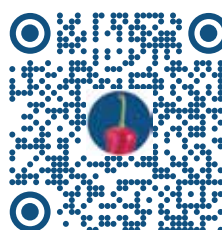
23.06.23 Friday

- 9:30 - 10:00 Get together
- 10:00 - 10:45 Talk 4 - Data Acquisition and Analysis with Innopsys
- 11:00 - 12:00 Hands-on training in the laboratory
- 12:00 - 13:00 Lunch
- 13:00 - 17:00 Hands-on training in the laboratory
- 17:00 Departure

Training venue

PEPperPRINT GmbH HQ
Tullastr. 2
69126 Heidelberg
Germany

+49 6221 7264889



How to get there by public transportation:

The PEPperPRINT Headquarters is located in walking distance (11min) from the Tram Station "Rohrbach Süd" or from the bus station (5min) "Englerstraße"

Recommended Airports:

Frankfurt am Main (FRA)

Shuttle service to Heidelberg from Frankfurt Airport: <https://www.tls-heidelberg.de/en/>
You can also take the Train from "Frankfurt(M)Flughafen" to Heidelberg Hbf.

Stuttgart (STR)

You can take the train from "Stuttgart Flughafen/Messe" to Heidelberg Hbf.